



Summer Special

\$ 661,000

Estimate Price

Land Details

Lot 235, Herbage Road, Tarneit, 3029

Lot Size 312.50 m² Build Area 19.90 sq

This Package inclusions :

- 2700mm Ceiling height
- Tiled Splashback to kitchen
- Deco Internal Doors
- Full Height Tiles to BATH and ENS
- 900mm appliances - Cooktop, Rangehood, Oven and 600mm Dishwasher
- Titled Land
- Laminate floor in all the open areas

House Features :

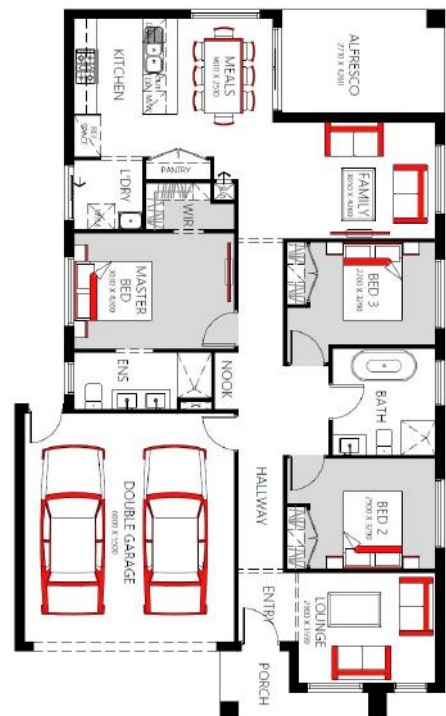
- 2340 high internal doors
- 2340H x 1200W Front Entry Door
- RACV 24/7 Emergency Assist (12 Months)
- Evaporative Cooling
- 40mm Waterfall Ends to Island bench
- 3 beds, 2 baths, Double Garage

Contact: Sales

Ph: 1300 982 098 Email: admin@singhhomes.com.au

3 | 2 | 2

OLIVER 199



Terms and conditions apply. Facades, fencing, concrete paving, planter boxes and decking are for illustrative purposes only. Floor plan shown will vary from façade image shown (refer to working drawings). Images may depict upgrade options available at additional charges such as timber look garage door, timber windows and porch pier lights. Package price excludes external lighting, telephone service, account opening fees, stamp duty on land, legal fees, conveyancing fees and bank fees. Singh Homes reserves the right to alter the images, descriptions, inclusions or promotion without notice. Refer to final quote and working drawings for actual costing and inclusions. Plan alterations may incur additional charges. Package price is correct at time of printing, pricing of land and build price is subject to change at any time. Confirm land prices and availability prior to purchase. All house and land packages are subject to developer approval. Speak to a Sales Consultant for further info.