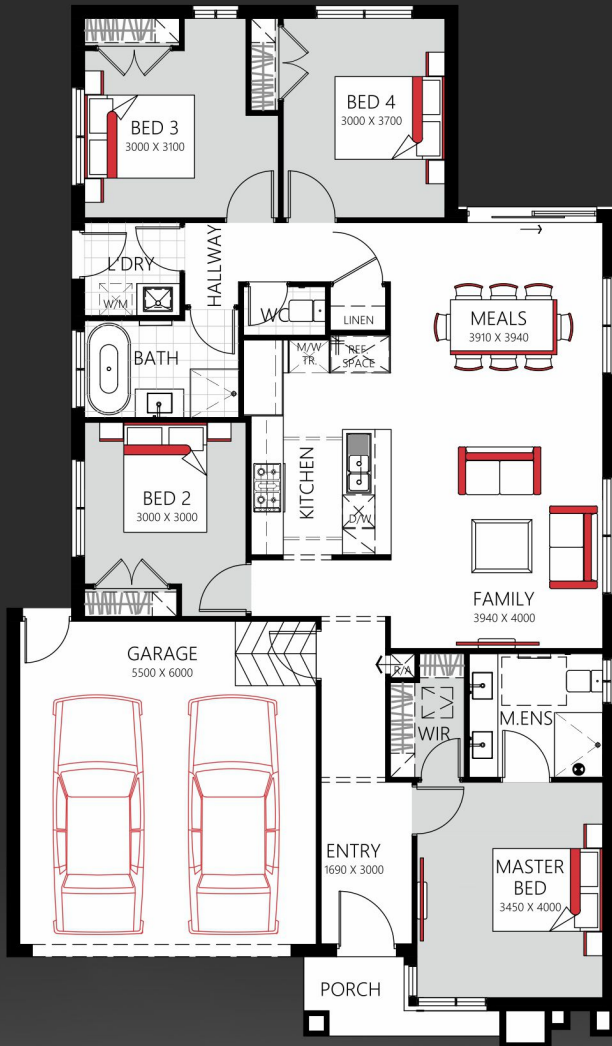


# Sebastian 190

**DISPLAY  
SERIES**



Fits lot 12.5m X 24.31m

## \$291,288

\$15,331/ SQ.

- FLOOR PLAN & FAÇADE AS DISPLAYED
- 7 STAR COMPLIANT
- MICROWAVE TOWER TO KITCHEN
- HIGH OVERHEAD CABINET
- ZAMADA FACADE AS DISPLAYED INCLUDED WORTH \$30,000
- NCC COMPLIANT
- LAMINATE TIMBER FLOORING THROUGHOUT THE HOUSE
- 600MM X 600MM PORCELAIN TILES IN BATHROOM AND ENSUITE
- DOUBLE GLAZE WINDOWS

**Luxury Pack - \$8,888/-**  
Refrigerated cooling,  
Tiles up to ceiling

**Stress free fixed site cost package Available\***



**Zamada**

**singhHOMES**

**FOR ENQUIRIES CONTACT**

**Head Office:** 31 Longford Road, Epping VIC 3076

**West Office:** Office 4, 201/203 Palmers Road

Truganina 3029

**1300 98 20 98**

[singhhomes.com.au](http://singhhomes.com.au)

\*T&C Apply