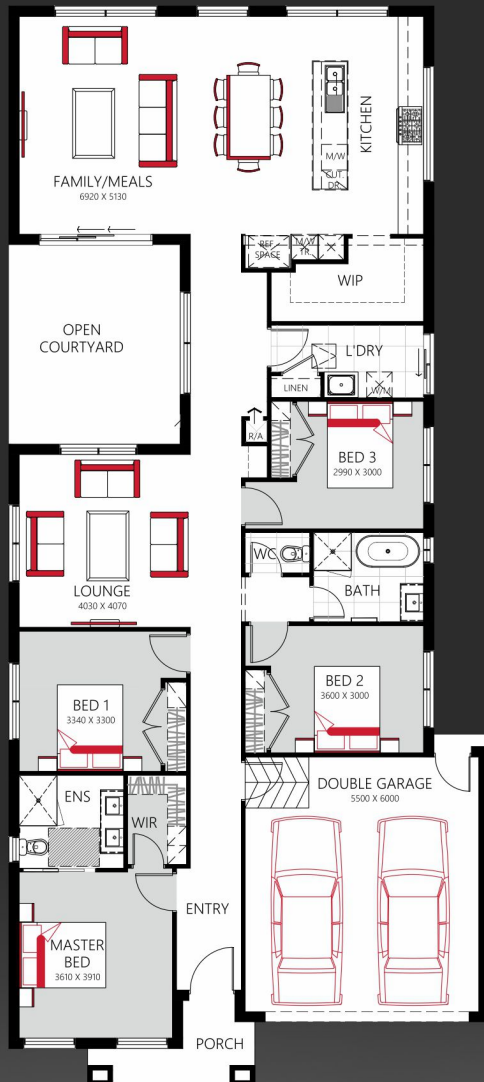


# Torquay 253

**DISPLAY  
SERIES**



Fits lot 12.5m X 32m

## \$338,225

\$13,368/ SQ.

- FLOOR PLAN & FAÇADE AS DISPLAYED
- 7 STAR COMPLIANT
- NCC COMPLIANT
- LAMINATE TIMBER FLOORING THROUGHOUT THE HOUSE
- 40MM STONE BENCHTOP IN KITCHEN, BATHROOM AND ENSUITE
- MICROWAVE TOWER TO KITCHEN X2
- 5 METRES OF DESIGNER KITCHEN WITH WINDOW SPLASHBACK
- FEATURE COURTYARD
- EXPANSIVE WINDOWS MAXIMIZING NATURAL LIGHT
- 'CLAREMONT' FAÇADE WORTH \$12,000
- DOUBLE GLAZE WINDOWS

**Luxury Pack - \$8,888/-**

Refrigerated cooling,  
Tiles upto ceiling

**Stress free fixed site cost package Available\***



**Claremont**

**singhHOMES**

**FOR ENQUIRIES CONTACT**

**Head Office:** 31 Longford Road, Epping VIC 3076

**West Office:** Office 4, 201/203 Palmers Road

Truganina 3029

**1300 98 20 98**

**singhhomes.com.au**

\*T&C Apply